



SERVICIO PESADO 2023



0324



IPS-24885

APLICACIONES
 APLANADORAS, EXCAVADORAS, SCRAPER, TRACTOR, RASPADORA
 Ø Out:159.5 Ø Int:118.2 H:413.1

EQUIVALENCIAS: BALDWIN:PA1670 WIX:24885
 GONHER:GA1287 LUBERFINER:LAF46 DONALSON:P158663

0325



IPS-24886

APLICACIONES
 COMPACTADORES, EQUIPOS DE PAVIMENTO, ORUGAS, RASPADORAS
 Ø Out:290/219 Ø Int:178 H:381

EQUIVALENCIAS: BALDWIN:PA2385 WIX:24886
 GONHER:GA482 LUBERFINER:LAF8482 DONALSON:P120407

0326



IPS-42045

APLICACIONES
 SCRAPERS, CAMIONES TODOTERRENO, EXCAVADORAS
 Ø Out:282 Ø Int:171 H:419

EQUIVALENCIAS: BALDWIN:PA1669 WIX:42045 GONHER:GA9045
 LUBERFINER:LAF45 FLEETGUARD:AF336 DONALSON:P181102

0327



IPS-42047

APLICACIONES
 APLANADORAS, CARGADORAS, EXCAVADOR, MONTACARGAS, NIVELADORAS
 Ø Out:234.1 Ø Int:123 H:317.5

EQUIVALENCIAS: BALDWIN:PA1615 WIX:42047 GONHER:GA8047
 LUBERFINER:LAF47 FLEETGUARD:AF344M DONALSON:R181103

0328



IPS-42089



APLICACIONES
 APLANADORAS, TRACTORES
 Ø Out:178 Ø Int:112 H:514

EQUIVALENCIAS: BALDWIN:PA1754 WIX:42089 GONHER: ...
 LUBERFINER:LAF1472 FLEETGUARD:AF1739 DONALSON:P108158

0329



IPS-W17816

APLICACIONES
 CUMMINS V-470C, V8-265,
 Ø Out:226 Ø Int:127 H:248

EQUIVALENCIAS: BALDWIN:PA1788 WIX:42108 GONHER:GA873
 LUBERFINER:LAF120A FLEETGUARD:AF373 DONALSON:P528219

0330

CASE



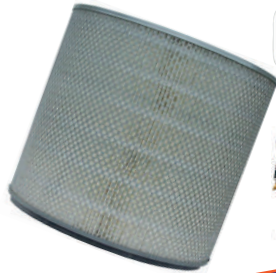
IPS-42119

APLICACIONES
APLANADORAS, EXCAVADORAS, SCRAPER, TRACTOR, RASPADORA

EQUIVALENCIAS: BALDWIN:PA1884 WIX:42119 GONHER:GA360
LUBERFINER:LAF6587 FLEETGUARD:AF418 DONALSON:P181034

0332

KENWORTH



IPS-42045

APLICACIONES
CATERPILLAR PR450, KENWORTH W900 K100

EQUIVALENCIAS: BALDWIN:PA1676FN WIX:42125 GONHER:GA26
LUBERFINER:LAF5255 FLEETGUARD:AF346 DONALSON:P181001

0334



IPS-42089

APLICACIONES
CASE CX800S, CUMMINS KT1150

EQUIVALENCIAS: BALDWIN:PA1905 WIX:42132 GONHER:GA357
LUBERFINER:LAF9159 FLEETGUARD:AF883 DONALSON:P114931

0331

KENWORTH



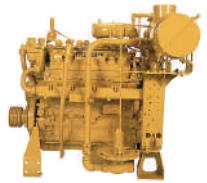
IPS-42124

APLICACIONES
KENWORTH K100 W900, ISUZU BUS w/10PA1, 10PB1

EQUIVALENCIAS: BALDWIN:PA1637FN WIX:42124 GONHER:GA 27
LUBERFINER:LAF241HD FLEETGUARD:AF351K DONALSON:P181000

0333

KENWORTH



IPS-42128

APLICACIONES
KENWORTH K184, 953, 993, 548CH - CATERPILLAR D349, 3406, 3406B, PR1000

EQUIVALENCIAS: BALDWIN:LL1894 WIX:42128 GONHER:GA356
LUBERFINER:LAF9155 FLEETGUARD:AF851 DONALSON:P182039

0335



IPS-42137

APLICACIONES
FORD 4610 SU, CATERPILLAR 3406 MOTOR DIESEL

EQUIVALENCIAS: BALDWIN:PA2455 WIX:42137 GONHER: -
LUBERFINER:LAF2517 FLEETGUARD:AF1885 DONALSON:P123007

0336



Sullivan Palatek
AIR COMPRESSORS



IPS-42138

APLICACIONES
JOY+COMPRESSORS - SULLIVAN+COMPRESSORS
Ø Out:282 Ø Int:171 H:381

EQUIVALENCIAS: BALDWIN:PA1864FN WIX:42138 GONHER:
LUBERFINER:LAF8627 FLEETGUARD:AF1884KM DONALSON:P181077

0328



Mercedes-Benz

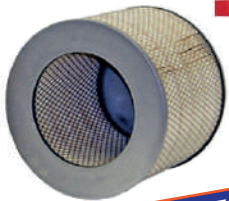


IPS-42208

APLICACIONES
CATERPILLAR PR450, KENWORTH W900 K100
Ø Out:281.8 Ø Int:170.8 H:406.4

EQUIVALENCIAS: BALDWIN:PA1885 WIX:42208 GONHER:GA106
LUBERFINER:LAF6769 FLEETGUARD:AF424 DONALSON:P181046

0340

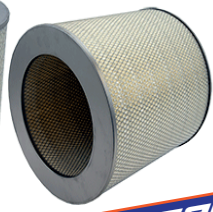


IPS-42215

APLICACIONES
KENWORTH C500, C550 SERIES
Ø Out:307.1 Ø Int:196.1 H:254

EQUIVALENCIAS: BALDWIN:PA1626 WIX:42215 GONHER:
LUBERFINER:LAF1215HD FLEETGUARD:AF262 DONALSON:P124356

0337



IPS-42192

APLICACIONES
KENWORTH KW809
Ø Out:349 Ø Int:283 H:356

EQUIVALENCIAS: BALDWIN:PA1630-2 WIX:42192 GONHER:GA979
LUBERFINER:LAF263 FLEETGUARD:AF362 DONALSON:P181031

0339



IPS-42209

APLICACIONES
CASE ESCAVADORA - CATERPILLAR - JOHN DEERE - HITACHI - KOMATSU
Ø Out:191/162 Ø Int:133 H:410

EQUIVALENCIAS: BALDWIN:PA2521 WIX:42209 GONHER:GA206
LUBERFINER:LAF9373 FLEETGUARD:AF1904M DONALSON:P119373

0341



IPS-42216

APLICACIONES
ESCAVADORAS CATERPILLAR, CASE, J.C.B., JOHN DEERE
Ø Out:275 Ø Int:165 H:521

EQUIVALENCIAS: BALDWIN:PA2582 WIX:42216 GONHER:
LUBERFINER:LAF1787 FLEETGUARD:LAF1787 DONALSON:P181082

0342 **CASE** **CAT** **JCB** **IPS-42217**

APLICACIONES
 ESCAVADORAS CASE, CATERPILLAR, HITACHI, CUMMINS, J.C.B.
 Ø Out:162 Ø Int:133 H:495

EQUIVALENCIAS: BALDWIN:PA2583 WIX:42217 GONHER:GA386
 LUBERFINER:LAF1790 FLEETGUARD:AF976 DONALSON:P124047

0343 **JOHN DEERE** **CASE** **IPS-42222**

APLICACIONES
 CASE ESCAVADORAS, CARGADORAS, JOHN DEERE TRACTORES
 Ø Out:134.5 Ø Int:66.6 H:288.9

EQUIVALENCIAS: BALDWIN:PA1667-FN WIX:42222 GONHER:GA16
 LUBERFINER:LAF222 FLEETGUARD:AF437 DONALSON:P181052

0344 **CASE** **Poclair** **IPS-42225**

APLICACIONES
 ESCAVADORAS Y MAQUINARIA CASE, HINO, POCLAIR
 Ø Out:307.2 Ø Int:196.2 H:406.4

EQUIVALENCIAS: BALDWIN:PA1886 WIX:42225 GONHER:GA261
 LUBERFINER:LAF9086 FLEETGUARD:AF421M DONALSON:P181041

0345 **CASE** **IPS-42226**

APLICACIONES
 CASE ESCAVADORA · JOHN DEERE
 Ø Out:194 Ø Int:154 H:391

EQUIVALENCIAS: BALDWIN:PA1904 WIX:42226 GONHER:GA262
 LUBERFINER:LAF9085 FLEETGUARD:AF821M DONALSON:P119370

0346 **CAT** **JOHN DEERE** **CASE** **HITACHI** **IPS-42234**

APLICACIONES
 CASE - CATERPILLAR - HITACHI - JOHN DEERE
 Ø Out:254 Ø Int:91 H:267

EQUIVALENCIAS: BALDWIN:LL1636FN WIX:42234 GONHER:GA20
 LUBERFINER:LAF234HD FLEETGUARD:AF350KM DONALSON:P181045

No incluye plastico

0347 **CAT** **Ford** **CASE** **IPS-42237**

APLICACIONES
 CASE, CATERPILLAR, FORD
 Ø Out:234 Ø Int:123 H:264

EQUIVALENCIAS: BALDWIN:PA1646FN WIX:42237 GONHER:GA24
 LUBERFINER:LAF237 FLEETGUARD:AF353K DONALSON:P181035

0348



APLICACIONES
CAMIONES DINA, KENWORTH, HARVESTER, KENWORTH

Ø Out:264 Ø Int:154 H:419 - PRIMARIO UTILICE CON IPS-42254

EQUIVALENCIAS: BALDWIN:PA2521 WIX:42253 GONHER:GA209
LUBERFINER:LAF9545 FLEETGUARD:AF979M DONALSON:P181028

IPS-42268

0350



APLICACIONES
VOLKSWAGEN VOCHOBUS - INTERNATIONAL HARVESTER, FORD TRACTORES

Ø Out:167.5 Ø Int:106.3 H:397.2

EQUIVALENCIAS: BALDWIN:PA1898 WIX:42268 GONHER:GA8150
LUBERFINER:LAF1822 FLEETGUARD:AF847 DONALSON:P619859

IPS-42334

0352



APLICACIONES
CATERPILLAR - OUTER USED W/42335 OR 42336 - RADIAL SEAL VERSION IS 46479 - FOR NANOPRO VERSION, USE 42334NP

Ø Out:281.7 Ø Int:170.6 H:342.9

EQUIVALENCIAS: BALDWIN:PA1634 WIX:42334 GONHER:GA9334
LUBERFINER:LAF334 FLEETGUARD:LAF334 DONALSON:P181104

0349



JOHN DEERE



APLICACIONES
CAMIONES DINA, KENWORTH, HARVESTER, KENWORTH

Ø Out:151.1 Ø Int:123.1 H:342.9 SECUNDARIO UTILICE CON IPS-42253

EQUIVALENCIAS: BALDWIN:PA2522 WIX:42254 GONHER:GA210
LUBERFINER:LAF7640 FLEETGUARD:AF987 DONALSON:P137640

IPS-42290

0351



APLICACIONES
EUCLID, CAT, I-R, TEREX

Ø Out:352 Ø Int:241 H:406

EQUIVALENCIAS: BALDWIN:LL1649 WIX:42290 GONHER:
LUBERFINER:LAF290A FLEETGUARD:AF361M DONALSON:P181036

IPS-42335

0353



APLICACIONES
CATERPILLAR - OUTER USED W/42335 OR 42336 - RADIAL SEAL VERSION IS 46479 - FOR NANOPRO VERSION, USE 42334NP

Ø Out:230/159 Ø Int:118 H:369

EQUIVALENCIAS: BALDWIN:PA1657 WIX:42335 GONHER:GA1286
LUBERFINER:LAF335 FLEETGUARD:AF338 DONALSON:P104385

SHEET 64

Marca Registrada 2106419
©2019 Creado por Grupo IPSEI

All Rights Reserved by IPSEI Group Company
IPSEI GROUP S. de R.L. de C.V.



@ipsei_mexico



@ipsei

www.grupoipsei.com

info@ipsei.com.mx

0354



IPS-42336

APLICACIONES
 (Inner used w/42334 on D-7F, D-8H, D-9 Caterpillar, Radial Seal Version 46478)
 Ø Out:159.5 Ø Int:118.2 H:333.3

EQUIVALENCIAS: BALDWIN:PA1675 WIX:42336 GONHER:GA1286
 LUBERFINER:LAF9972 FLEETGUARD:AF338/AF959 DONALSON:P158662

0356



IPS-42378

APLICACIONES
 Caterpillar Equipment (Outer used w/ 42379 or 46359)
 Ø Out:213.5 Ø Int:102.3 H:266.7

EQUIVALENCIAS: BALDWIN:PA1673 WIX:42378 GONHER:GA1008
 LUBERFINER:LAF7531 FLEETGUARD:AF337 DONALSON:P019167

0358



IPS-42422

APLICACIONES
 Various HD Trks + Equipment (Outer used w/42423 inner) For Nano Pro Version use 42422NP
 Ø Out:307 Ø Int:196 H:470

EQUIVALENCIAS: BALDWIN:PA1846 WIX:42422 GONHER:GA6129
 LUBERFINER:LAF6632 FLEETGUARD:AF472 DONALSON:P181002

0355



IPS-42376

APLICACIONES
 Allis-Chalmers Power Units, Cummins Engines, Euclid
 Ø Out:281.7 Ø Int:170.6 H:419.1

EQUIVALENCIAS: BALDWIN:PA1885 WIX:42376 GONHER:GA374
 LUBERFINER:LAF262 FLEETGUARD:AF348 DONALSON:P181032

0357



IPS-42398

APLICACIONES
 Komatsu Crawler Tractors (Outer used w/42399)
 Ø Out:233 Ø Int:123 H:394

EQUIVALENCIAS: BALDWIN:PA2451 WIX:42398 GONHER:
 LUBERFINER:LAF8559 FLEETGUARD:AF4159 DONALSON:P145704

0359



IPS-42423

APLICACIONES
 KOMATSU, ALLIS CHALMERS, NISSAN
 Ø Out:185/215 Ø Int:157 H:450

EQUIVALENCIAS: BALDWIN:PA1880 WIX:42423 GONHER:GA6127
 LUBERFINER:LAF6641 FLEETGUARD:AF471 DONALSON:P119372

0360



IPS-42465

APLICACIONES
KENWORTH T800, Caterpillar C11
Ø Out:352 Ø Int:241 H:608

EQUIVALENCIAS: BALDWIN:PA2559 WIX:42465 GONHER:GA480
LUBERFINER:LAF2069 FLEETGUARD:AF1748M DONALSON:P181058

0361

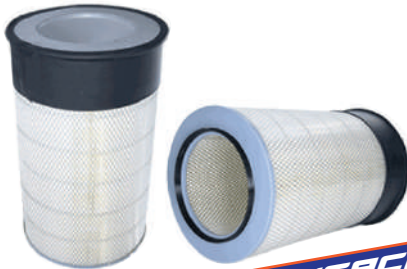


IPS-42491

APLICACIONES
Allis-Chalmers Power Units, Cummins Engines, Euclid
Ø Out:307 Ø Int:196 H:470

EQUIVALENCIAS: BALDWIN:PA2525 WIX:42491 GONHER:GA107
LUBERFINER:LAF9544 FLEETGUARD:AF982M DONALSON:P181015

0362



IPS-42493



0363



APLICACIONES
Sullair Air Compressors (Outer used w/42494 inner) use with 42493
Ø Out:194 Ø Int:154 H:470

EQUIVALENCIAS: BALDWIN:PA2519 WIX:42494 GONHER:
LUBERFINER:LAF1854 FLEETGUARD:AF1894M DONALSON:P124860

0364



SIN ASPAS DE PLASTICO

IPS-42518

APLICACIONES
CASE, JCB ESCAVADORAS
Ø Out:307 Ø Int:196 H:470

EQUIVALENCIAS: BALDWIN:LL2360FN WIX:42518 GONHER:GA1532
LUBERFINER:LAF9538 FLEETGUARD:AF1606KM DONALSON:P182062

0365



IPS-42520

APLICACIONES
EXCAVADORAS, CAMIONES
Ø Out:145 Ø Int:116 H:305

EQUIVALENCIAS: BALDWIN:PA2779 WIX:42520 GONHER:GA254
LUBERFINER:LAF9000 FLEETGUARD:AF1768M DONALSON:P181080

0366

ISUZU

IPS-42521



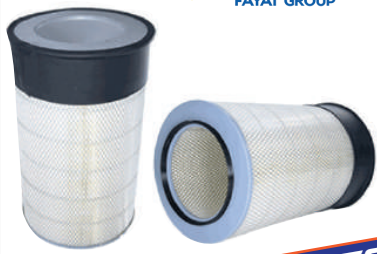
APLICACIONES
EXCAVADORAS, CAMIONES USE WITH 42520
Ø Out:145 Ø Int:116 H:305

EQUIVALENCIAS: BALDWIN:PA2545 WIX:42521 GONHER: -
LUBERFINER:LAF7315 FLEETGUARD:AF1767 DONALSON:P127315

0367



IPS-42546



APLICACIONES
APLANADORAS
Ø Out:345/324 Ø Int:213 H:621

EQUIVALENCIAS: BALDWIN:PA2456 WIX:42546 GONHER: -
LUBERFINER:LAF6453 FLEETGUARD:LAF6453 DONALSON:P181049

0368



IPS-42547



APLICACIONES
APLANADORAS USE WITH 42546
Ø Out:209 Ø Int:181 H:568

EQUIVALENCIAS: BALDWIN:PA2457 WIX:42547 GONHER:GA405
LUBERFINER:LAF1765 FLEETGUARD:AF4060 DONALSON:P181137

0369



IPS-42608



APLICACIONES
BOMAG, GROVE, KOMATSU, TRACTORES Y COMPRESORES
Ø Out:241 Ø Int:132 H:495

EQUIVALENCIAS: BALDWIN:PA2475 WIX:42608 GONHER:GA405
LUBERFINER:LAF1718 FLEETGUARD:AF4060 DONALSON:P181137

0370



IPS-42610



APLICACIONES
GMC Astro, IHC, Kenworth, Mack, Peterbilt, White Trucks
Ø Out:264/191 Ø Int:176 H:737

EQUIVALENCIAS: BALDWIN:PA3951 WIX:42610 GONHER:GA377
LUBERFINER:LAF9396 FLEETGUARD:AF954M DONALSON:P151097

0371



IPS-42611



APLICACIONES
Bedford, GMC Astro, Ford, IHC, White HD Trucks
Ø Out:220/146 Ø Int:132 H:737

EQUIVALENCIAS: BALDWIN:PA2500 WIX:42611 GONHER:GA372
LUBERFINER:8044/9472 FLEETGUARD:AF931M DONALSON:P129472

0372

ISUZU

IPS-42613



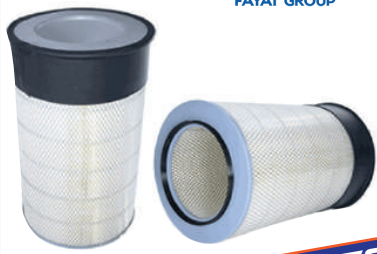
APLICACIONES
EXCAVADORAS, CAMIONES USE WITH 42520
Ø Out:145 Ø Int:116 H:305

EQUIVALENCIAS: BALDWIN:PA2540 WIX:42613 GONHER:GA373
LUBERFINER:LAF959 FLEETGUARD:AF1758M DONALSON:P130959

0373



IPS-42546



APLICACIONES
APLANADORAS
Ø Out:345/324 Ø Int:213 H:621

EQUIVALENCIAS: BALDWIN:PA2456 WIX:42546 GONHER:
LUBERFINER:LAF6453 FLEETGUARD:LAF6453 DONALSON:P181049

0374



IPS-42547



APLICACIONES
APLANADORAS USE WITH 42546
Ø Out:209 Ø Int:181 H:568

EQUIVALENCIAS: BALDWIN:PA2457 WIX:42547 GONHER:GA405
LUBERFINER:LAF1765 FLEETGUARD:AF4060 DONALSON:P181137

0375



IPS-42608



APLICACIONES
BOMAG, GROVE, KOMATSU, TRACTORES Y COMPRESORES
Ø Out:241 Ø Int:132 H:495

EQUIVALENCIAS: BALDWIN:PA2475 WIX:42608 GONHER:GA405
LUBERFINER:LAF1718 FLEETGUARD:AF4060 DONALSON:P181137

0376



IPS-42610



APLICACIONES
GMC Astro, IHC, Kenworth, Mack, Peterbilt, White Trucks
Ø Out:264/191 Ø Int:176 H:737

EQUIVALENCIAS: BALDWIN:PA3951 WIX:42610 GONHER:GA377
LUBERFINER:LAF9396 FLEETGUARD:AF954M DONALSON:P151097

0377



IPS-42611



APLICACIONES
Bedford, GMC Astro, Ford, IHC, White HD Trucks
Ø Out:220/146 Ø Int:132 H:737

EQUIVALENCIAS: BALDWIN:PA2500 WIX:42611 GONHER:GA372
LUBERFINER:8044/9472 FLEETGUARD:AF931M DONALSON:P129472

0378

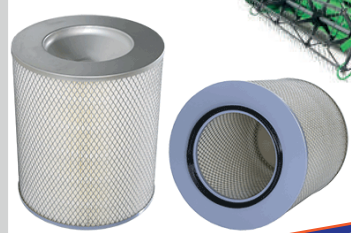


IPS-42680

APLICACIONES
CATERPILLAR, TRACTORES DE ORUGA, COMPACTADORES
Ø Out:318 Ø Int:232 H:394

EQUIVALENCIAS: BALDWIN:PA2384 WIX:42680 GONHER:GA483
LUBERFINER:LAF8483 FLEETGUARD:AF873 DONALSON:P181120

0379



IPS-42682

KOMATSU

APLICACIONES
KOMATSU, TRACTORES, EXCAVADORAS, HARVESTER
Ø Out:264 Ø Int:154 H:318

EQUIVALENCIAS: BALDWIN:PA2371 WIX:42682 GONHER:GA5413
LUBERFINER:LAF8548 FLEETGUARD:AF904 DONALSON:P131348

0380

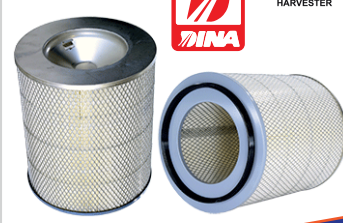


IPS-42700

APLICACIONES
CHEVROLET TITAN, GMC ASTRO, CAMIONES
Ø Out:225 Ø Int:148 H:737

EQUIVALENCIAS: BALDWIN:PA2503 WIX:42700 GONHER:GA109
LUBERFINER:1146/1591 FLEETGUARD:AF960 DONALSON:P181017

0381



IPS-42759

APLICACIONES
TRACTOCAMIONES, DINA, INTERNATIONAL, GM, HARVERTER
Ø Out:264 Ø Int:154 H:318

EQUIVALENCIAS: BALDWIN:PA2520 WIX:42759 GONHER:GA109
LUBERFINER:LAF942 FLEETGUARD:AF942M DONALSON:P181019

0382

HITACHI



IPS-42769

APLICACIONES
ESCAVADORAS MARCA HITACHI, BOBCAT, FIAT, HESTON, JOHN DEERE
Ø Out:79.5 Ø Int:54 H:254

EQUIVALENCIAS: BALDWIN:PA2489 WIX:42769 GONHER:GA167
LUBERFINER:LAF1793 FLEETGUARD:AF4510 DONALSON:P154003

0383



IPS-42776

APLICACIONES
CAMIONES, TRACTOCAMIONES DE VOLTEO FORD
Ø Out:264 Ø Int:153 H:406

EQUIVALENCIAS: BALDWIN:PA2425 WIX:42776 GONHER:GA167
LUBERFINER:LAF6300 FLEETGUARD:AF886 DONALSON:P181014

0384

IPS-42784



APLICACIONES
FREIGHTLINER FL80
Ø Out:225 Ø Int:139 H:584

EQUIVALENCIAS: BALDWIN:PA2482 WIX:42784 GONHER:GA2433
LUBERFINER:LAF8955 FLEETGUARD:AF966 DONALSON:P181003

0385

IPS-42865



APLICACIONES
ALLIS-CHALMERS, CATERPILLAR, MICHIGAN, ESCAVADORAS
Ø Out:325 Ø Int:213 H:280

EQUIVALENCIAS: BALDWIN:PA645 WIX:42865 GONHER:GA5648
LUBERFINER:LAF268 FLEETGUARD:AF289 DONALSON:P119417

0386

IPS-42875



APLICACIONES
CHEVROLET TITAN, GMC ASTRO, CAMIONES
Ø Out:225 Ø Int:148 H:737

EQUIVALENCIAS: BALDWIN:PA2774 WIX:42875 GONHER:GA361
LUBERFINER:LAF8971 FLEETGUARD:AF4560 DONALSON:P778605

0387

IPS-42924



APLICACIONES
CATERPILLAR, DAEWOO, HITACHI, J.C.B., TRACTORES Y ESCAVADORAS
Ø Out:117 Ø Int:89 H:330

EQUIVALENCIAS: BALDWIN:PA1911 WIX:42924 GONHER:GA361
LUBERFINER:LAF6834 FLEETGUARD:AF490M DONALSON:

0388

IPS-42926



APLICACIONES
TRACTORES Y ESCAVADORAS, HITACHI, JOHN DEERE
Ø Out:153.9 Ø Int:88.9 H:314.3

EQUIVALENCIAS: BALDWIN:PA1882 WIX:42926 GONHER:GA403
LUBERFINER:LAF6032 FLEETGUARD:AF829 DONALSON:P130766

0389

IPS-42927



APLICACIONES
CASE, MICHIGAN, EXCAVADORAS
Ø Out:264 Ø Int:154 H:365

EQUIVALENCIAS: BALDWIN:PA1895 WIX:42927 GONHER:GA403
LUBERFINER:LAF9200 FLEETGUARD:AF427M DONALSON:P181044

0390

FREIGHTLINER



IPS-42941



APLICACIONES
FREIGHTLINER, WESTERN STAR
Ø Out:264 Ø Int:153 H:686

EQUIVALENCIAS: BALDWIN:L2493 WIX:42941 GONHER:
LUBERFINER:LAF8494 FLEETGUARD:AF161M DONALSON:P182016

0392

KENWORTH

FREIGHTLINER

IPS-42961

GMC



APLICACIONES
FREIGHTLINER, GMC, KENWORTH
Ø Out:324 Ø Int:213 H:584

EQUIVALENCIAS: BALDWIN:PA2317 WIX:42961 GONHER:GA378
LUBERFINER:LAF6918 FLEETGUARD:AF852M DONALSON:P181008

0394



IPS-42980



APLICACIONES
CATERPILLAR,
Ø Out:307 Ø Int:196 H:343

EQUIVALENCIAS: BALDWIN:PA2358 WIX:42980 GONHER:GA7716
LUBERFINER:LAF7716 FLEETGUARD:AF875M DONALSON:P181118

0391



IPS-42943



Sin plastico

APLICACIONES
FORD L9000, LA9000, LLA9000, LN9000, LNT9000
Ø Out:307 Ø Int:196 H:268

EQUIVALENCIAS: BALDWIN:PA1980 WIX:42943 GONHER:
LUBERFINER:LAF1858 FLEETGUARD:AF478K DONALSON:P181013

0393



GMC

IPS-42976



APLICACIONES
CATERPILLAR, CHEVROLET, GMC, INTERNATIONAL, INTERNATIONAL HARVESTER
Ø Out:307 Ø Int:196 H:343

EQUIVALENCIAS: BALDWIN:PA1920 WIX:42976 GONHER:GA31
LUBERFINER:LAF9726 FLEETGUARD:AF408 DONALSON:P117327

0395



IPS-42981



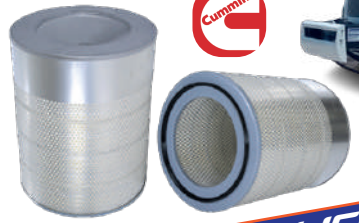
APLICACIONES
CATERPILLAR,
Ø Out:259/194 Ø Int:152 H:343

EQUIVALENCIAS: BALDWIN:PA2359 WIX:42981 GONHER:GA7360
LUBERFINER:LAF7360 FLEETGUARD:AF876 DONALSON:P158670

0396



IPS-42982



APLICACIONES
CUMMINS, INTERNATIONAL, INTERNATIONAL HARVESTER
Ø Out:307 Ø Int:196 H:399

EQUIVALENCIAS: BALDWIN:PA2330 WIX:42982 GONHER:GA2984
LUBERFINER:LAF928 FLEETGUARD:AF928M DONALSON:P181056

0397



IPS-46232



APLICACIONES
CATERPILLAR
Ø Out:213 Ø Int:103 H:149

EQUIVALENCIAS: BALDWIN:PA2575 WIX:46232 GONHER:GA1750
LUBERFINER:LAF1820 FLEETGUARD:AF1890M DONALSON:P181125

0398



IPS-46233



APLICACIONES
CATERPILLAR MONTACARGAS
Ø Out:170/100 Ø Int:59 H:156

EQUIVALENCIAS: BALDWIN:PA2576 WIX:46233 GONHER:-
LUBERFINER:LAF2519 FLEETGUARD:AF1891 DONALSON:P134470

0399



IPS-46251



APLICACIONES
CATERPILLAR RETROSCAVADORAS
Ø Out:170/100 Ø Int:60 H:136

EQUIVALENCIAS: BALDWIN:PA2730 WIX:46251 GONHER:GA7626
LUBERFINER:LAF7530 FLEETGUARD:AF4886 DONALSON:P527530

0400



IPS-46325



APLICACIONES
CATERPILLAR, INTERNATIONAL
Ø Out:307 Ø Int:196 H:343

EQUIVALENCIAS: BALDWIN:PA2586 WIX:46325 GONHER:GA119
LUBERFINER:LAF1931 FLEETGUARD:AF4579 DONALSON:P155633

0401



JOHN DEERE



IPS-46375



APLICACIONES
JOHN DEERE
Ø Out:105/86 Ø Int:74 H:279

EQUIVALENCIAS: BALDWIN:PA2570 WIX:46375 GONHER:-
LUBERFINER:LAF1394 FLEETGUARD:AF1980 DONALSON:P131394

0402



IPS-46511



APLICACIONES
CATERPILLAR COMPACTADORAS
Ø Out:121.4 Ø Int:92.8 H:307.9

EQUIVALENCIAS: BALDWIN:PA1647 WIX:46511 GONHER:GA1285
LUBERFINER:LAF1963 FLEETGUARD:AF343 DONALSON:P158678

0403



IPS-46232

APLICACIONES
FORD TRACTORES
Ø Out:213 Ø Int:103 H:149

EQUIVALENCIAS: BALDWIN:PA2431 WIX:46531 GONHER:GA589
LUBERFINER:LAF8552 FLEETGUARD:AF1641 DONALSON:P181204

0404



ISUZU

IPS-46544



APLICACIONES
CHEVROLET, ISUZU, GMC, JOHN DEERE, KOMATSU
Ø Out:275 Ø Int:165 H:394

EQUIVALENCIAS: BALDWIN:PA2577 WIX:46544 GONHER:
LUBERFINER:LAF1834 FLEETGUARD:AF1862M DONALSON:P134353

0405



ISUZU

IPS-46545



APLICACIONES
Ø Out:162 Ø Int:133 H:368

EQUIVALENCIAS: BALDWIN:PA2578 WIX:46545 GONHER:
LUBERFINER:LAF1835 FLEETGUARD:AF1863M DONALSON:P526432

0406

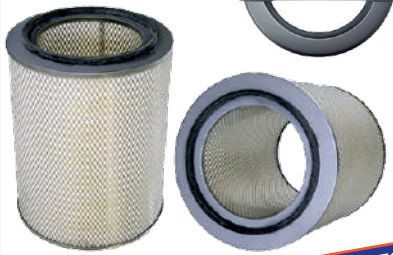


IPS-46554

APLICACIONES
CAMIONES Y EXCAVADORAS, VOLKSWAGEN, VOLVO, SCANIA, RENAULT, MERCEDES-BENZ
Ø Out:197 Ø Int:103 H:378

EQUIVALENCIAS: BALDWIN:PA2405 WIX:46554 GONHER:GA444
LUBERFINER:LAF2052 FLEETGUARD:AF25044M DONALSON:P771561

0407



IPS-46375

APLICACIONES
VOLVO
Ø Out:105/86 Ø Int:74 H:279

EQUIVALENCIAS: BALDWIN:PA2661 WIX:46596 GONHER:GA1096
LUBERFINER:LAF4365 FLEETGUARD:AF1943M DONALSON:P181096

0408 KOMATSU



IPS-46511

APLICACIONES
CASE, CATERPILLAR, DAEWOO, HITACHI, KOMATSU
H:394
Ø Int:121

EQUIVALENCIAS: BALDWIN:PA2788 WIX:46600 GONHER:
LUBERFINER:LAF1804 FLEETGUARD:AF4567 DONALSON:P800103

0409 KOMATSU



IPS-46511

APLICACIONES
CASE, CATERPILLAR, DAEWOO, HITACHI, KOMATSU
H:394
Ø Int:121

EQUIVALENCIAS: BALDWIN:PA2788 WIX:46600 GONHER:
LUBERFINER:LAF1804 FLEETGUARD:AF4567 DONALSON:P800103

0410

KOMATSU



IPS-46620

APLICACIONES
KOMATSU
Ø Out:244 Ø Int:133 H:393

EQUIVALENCIAS: BALDWIN:PA2667 WIX:46620 GONHER:
LUBERFINER:LAF1755 FLEETGUARD:AF893 DONALSON:P181139

0411



IPS-46629

APLICACIONES
CATERPILLAR, CHALLENGER
H:413.1
Ø Int:118.2

EQUIVALENCIAS: BALDWIN:PA1670 WIX:46629 GONHER:GA1287
LUBERFINER:LAF1843 FLEETGUARD:AF4526 DONALSON:P521847

0412

AUTOCAR



IPS-46675

APLICACIONES
AUTOCAR, VOLVO
Ø Out:351 Ø Int:241 H:406

EQUIVALENCIAS: BALDWIN:LL2685 WIX:46675 GONHER:GA1095
LUBERFINER:LAF1095 FLEETGUARD:AF1897M DONALSON:P181095

0413



IPS-46722

APLICACIONES
CASE, CHAMPION
Ø Out:470 Ø Int:147 H:251/232

EQUIVALENCIAS: BALDWIN:PA2620 WIX:46722 GONHER:GA309
LUBERFINER:1813/8156 FLEETGUARD:AF1934M DONALSON:P159548

0414



APLICACIONES
 CASE, CHAMPION
 Ø Out:232 Ø Int:148 H:470

EQUIVALENCIAS: BALDWIN:PA2688 WIX:46723 GONHER:GA398
 LUBERFINER:1814/4192 FLEETGUARD:AF1935M DONALSON:P181070

IPS-46723

0415



APLICACIONES
 FREIGHTLINER, CUMMINS, CHEVROLET, INTERNATIONAL
 Ø Out:411 Ø Int:241 H:470

EQUIVALENCIAS: BALDWIN:PA2333 WIX:46726 GONHER:GA376
 LUBERFINER:LAF8047 FLEETGUARD:AF872 DONALSON:P181099

IPS-46726

0416



APLICACIONES
 VOLVO, SULLAIR, PEGASO, M.A.N.
 Ø Out:244 Ø Int:133 H:393

EQUIVALENCIAS: BALDWIN:PA2776 WIX:46741 GONHER:GA467
 LUBERFINER:LAF1726 FLEETGUARD:AF1802 DONALSON:P778613

IPS-46741

0417



APLICACIONES
 JOHN DEERE, ISUZU, KOMATSU, HITACHI, CATERPILLAR
 H:413.1
 Ø Out:159.5 Ø Int:118.2

EQUIVALENCIAS: BALDWIN:PA2676 WIX:46774 GONHER:GA758
 LUBERFINER:LAF1465 FLEETGUARD:AF4801 DONALSON:P181073

IPS-46774

0418



APLICACIONES
 FREIGHTLINER, GMC, WESTERN STAR, CHEVROLET
 Ø Out:298/269 Ø Int:170 H:521

EQUIVALENCIAS: BALDWIN:PA2704 WIX:46800 GONHER:
 LUBERFINER:LAF5842 FLEETGUARD:AF4535M DONALSON:P155842

IPS-46800

0419



APLICACIONES
 INTERNATIONAL
 Ø Out:220/146 Ø Int:132 H:584

EQUIVALENCIAS: BALDWIN:PA2623 WIX:46833 GONHER:
 LUBERFINER:LAF1339 FLEETGUARD:AF1742M DONALSON:AF1742M

IPS-46833

0420



IPS-46840

APLICACIONES
FREIGHTLINER, INTERNATIONAL
Ø Out:263/191 Ø Int:176 H:572

EQUIVALENCIAS: BALDWIN:PA2715 WIX:46840 GONHER:GA389
LUBERFINER:LAF4575 FLEETGUARD:AF1743M DONALSON:P154575

0421

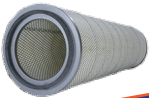


IPS-46860

APLICACIONES
FREIGHTLINER, CHEVROLET, INTERNATIONAL
Ø Out:324/249 Ø Int:213 H:635

EQUIVALENCIAS: BALDWIN:PA2631 WIX:46860 GONHER:GA371
LUBERFINER:LAF2100 FLEETGUARD:AF1817M DONALSON:P142100

0422



IPS-46876

APLICACIONES
INTERNATIONAL, KENWORTH
Ø Out:264/191 Ø Int:176 H:724

EQUIVALENCIAS: BALDWIN:PA2660 WIX:46876 GONHER:GA694
LUBERFINER:LAF694 FLEETGUARD:AF1846 DONALSON:P150694

0423



IPS-46883

APLICACIONES
FREIGHTLINER, KENWORTH, WESTERN STAR
Ø Out:298/269 Ø Int:170 H:568

EQUIVALENCIAS: BALDWIN:PA2705 WIX:46883 GONHER:3551
LUBERFINER:LAF3551 FLEETGUARD:AF1968M DONALSON:P153551

0424



Kubota



IPS-46800

APLICACIONES
KUBOTA EXCAVADORAS
Ø Out:179/133 Ø Int:72 H:293

EQUIVALENCIAS: BALDWIN:PA3979 WIX:49494 GONHER:
LUBERFINER:LAF4514 FLEETGUARD:AF4991 DONALSON:P777240

0425



APLICACIONES
MOTORES CUMMINS
Ø Out:278/207 Ø Int:171 H:616

EQUIVALENCIAS: BALDWIN:PA3644 WIX:WA10886 GONHER:GA388
LUBERFINER:LAF1838 FLEETGUARD:AF25092 DONALSON:P940071

IPS-10886

MR
IPSEI

IT'S BETTER WITH IPSEI!

IPS-46860

0426

SCANIA



IPS-436

APLICACIONES
DAF, HANOMAG, SCANIA, VOLVO BM
Ø Out:305/241 Ø Int:132 H:495

EQUIVALENCIAS: BALDWIN:PA3477 WIX: - GONHER:GA436
LUBERFINER:LAF3702 FLEETGUARD:AF970 DONALSON:P772507

0427

SCANIA



APLICACIONES
DAF, SCANIA, SOLARIS
Ø Out:303 Ø Int:191 H:378

EQUIVALENCIAS: BALDWIN:PA2813 WIX: - GONHER: -
LUBERFINER:LAF1750 FLEETGUARD: - DONALSON:P771575



JOHN DEERE



ISUZU



CASE



SHEET 77

Marca Registrada 2106419
©2019 Creado por Grupo IPSEI
All Rights Reserved by IPSEI Group Company
IPSEI GROUP S. de R.L. de C.V.

0428



IPS-24094

APLICACIONES
CATERPILLAR, DODGE RAM 2500 - 3500
 Ø Out:300 Ø Int:273 H:58

EQUIVALENCIAS: BALDWIN:PA3823 WIX:24094 GONHER:
 LUBERFINER:AF7878 FLEETGUARD:AF25090 DONALSON:PA536429

0430



IPS-42029

APLICACIONES
FREIGHTLINER CLASICO
 Ø Out:280 Ø Int:145 H:493

EQUIVALENCIAS: BALDWIN:RS3730 WIX:42029 GONHER:
 LUBERFINER:LAF8172 FLEETGUARD:AF25480 DONALSON:P608653

0432



IPS-42714

APLICACIONES
COMPRESORES, INTERNATIONAL, KENWORTH
 Ø Out:76 Ø Int:34 H:39

EQUIVALENCIAS: BALDWIN:PA1704 WIX:42714 GONHER:GA35
 LUBERFINER:LAF292 FLEETGUARD:AF364 DONALSON:P524392

0429



IPS-42029

APLICACIONES
FREIGHTLINER CLASICO
 Ø Out:280 Ø Int:145 H:493

EQUIVALENCIAS: BALDWIN:RS3730 WIX:42029 GONHER:
 LUBERFINER:LAF8172 FLEETGUARD:AF25480 DONALSON:P608653

0431



IPS-42455

APLICACIONES
KENWORTH, PETERBILT, CATERPILLAR, CUMMINS
 Ø Out:280 Ø Int:170 H:398

EQUIVALENCIAS: BALDWIN:RS3750 WIX:42455 GONHER:GA968R
 LUBERFINER:LAF5873 FLEETGUARD:AF25598 DONALSON:P542100

0433



IPS-42796

APLICACIONES
STERLING, MITSUBISHI, FREIGHTLINER
 Ø Out:237.4 Ø Int:118.4 H:279.4

EQUIVALENCIAS: BALDWIN:RS4806 WIX:42796 GONHER:GA245
 LUBERFINER:LAF4179 FLEETGUARD:AF27690 DONALSON:P500191

0434

CASE



JOHN DEERE

KENWORTH



IPS-42803



APLICACIONES
CASE, INTERNATIONAL, HITACHI, J.C.B., JOHN DEERE
Ø Out:280 Ø Int:145 H:522

EQUIVALENCIAS: BALDWIN:RS3744 WIX:42803 GONHER:
LUBERFINER: LAF8669 FLEETGUARD:AF25437 DONALSON:P537876

0436



IPS-42806



APLICACIONES
MONTACARGAS TOYOTA
Ø Out:137 Ø Int:81 H:281

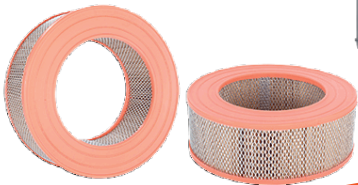
EQUIVALENCIAS: BALDWIN:RS3940 WIX:42806 GONHER:
LUBERFINER:LAF8730 FLEETGUARD:LAF8731 DONALSON:P610905

0438

Atlas Copco



IPS-42878



APLICACIONES
COMPRESORES ATLAS COPCO
Ø Out:303 Ø Int:108 H:191

EQUIVALENCIAS: BALDWIN:PA1704 WIX:42878 GONHER:GA32
LUBERFINER:LAF8578 FLEETGUARD:AF4088 DONALSON:P607288

0435

CASE



JOHN DEERE

KENWORTH



IPS-42804



APLICACIONES
CASE, INTERNATIONAL, HITACHI, J.C.B., JOHN DEERE
Ø Out:150/142 Ø Int:108 H:503

EQUIVALENCIAS: BALDWIN:RS3745 WIX:42804 GONHER:
LUBERFINER:LAF8670 FLEETGUARD:AF25523 DONALSON:P537877

0437

FREIGHTLINER



IPS-42809



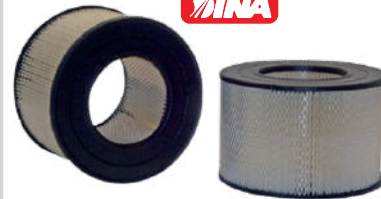
APLICACIONES
FREIGHTLINER, THOMAS BUS
Ø Out:325 Ø Int: - H:203

EQUIVALENCIAS: BALDWIN:CA4700 WIX:42809 GONHER:GA701
LUBERFINER:LAF3233 FLEETGUARD:LAF3233 DONALSON:P548070 / P607955

0439



IPS-42916



APLICACIONES
CAMIONES DINA Y MOTORES CUMMINS
Ø Out:237.4 Ø Int:118.4 H:279.4

EQUIVALENCIAS: BALDWIN:PA1866 WIX:42916 GONHER:GA21
LUBERFINER:LAF386 FLEETGUARD:AF314 DONALSON:P526488

0440



FREIGHTLINER

IPS-42971

APLICACIONES FREIGHTLINER

Ø Out:293 Ø Int:177 H:593

EQUIVALENCIAS: BALDWIN:RS3539 WIX:42971 GONHER:GA5399 LUBERFINER:LAF4816 FLEETGUARD:AF25247 DONALSON:P534816

0442



Ford

CAT

EXmark

IPS-46438

APLICACIONES CATERPILLAR, INTERNATIONAL, EXMARK, FORD

Ø Out:104 Ø Int:61 H:274

EQUIVALENCIAS: BALDWIN:RS3704 WIX:46438 GONHER:GA880R LUBERFINER:LAF8195 FLEETGUARD:AF25575 DONALSON:AF25575

0444



arco

Challenger

CAT

IPS-46478

APLICACIONES CATERPILLAR, CHALLENGER, AGCO

Ø Out:149/141 Ø Int:105 H:315

EQUIVALENCIAS: BALDWIN:RS3505 WIX:46478 GONHER: LUBERFINER:LAF4502 FLEETGUARD:AF25126M DONALSON:P532502

0441



CAT

CASE

IPS-42985

APLICACIONES CASE, INTERNATIONAL, BAD BOY, CATERPILLAR

Ø Out:61/59 Ø Int:44.9 H:264.9

EQUIVALENCIAS: BALDWIN:RS3730 WIX:42985 GONHER: LUBERFINER:LAF8690 LAF8172 FLEETGUARD:AF25552 DONALSON:P822858

0443



Chevrolet

CADILLAC

GMC

IPS-46441

APLICACIONES GMC, CHEVROLET, CADILLAC

Ø Out:184 Ø Int:92 H:280

EQUIVALENCIAS: BALDWIN:RS3706 WIX:46441 GONHER:GA732R LUBERFINER:AF1301 FLEETGUARD:AF25259 DONALSON:P53355

0445



CAT

Challenger

IPS-46479

APLICACIONES

Ø Out:280 Ø Int:145 H:341

EQUIVALENCIAS: BALDWIN:RS3504 WIX:46479 GONHER: LUBERFINER:LAF4501 FLEETGUARD:AF25125M DONALSON:P532501

0446



CASE



IPS-46489

APLICACIONES BOBCAT, BRANSON, CASE
 Ø Out:127 Ø Int:80 H:312

EQUIVALENCIAS: BALDWIN:RS3549 WIX:46489 GONHER:
 LUBERFINER:LAF8143 FLEETGUARD:AF25308 DONALSON:P532410

0447



CASE



IPS-46490

APLICACIONES BOBCAT, BRANSON, CASE
 Ø Out:83/79 Ø Int:64 H:303.5

EQUIVALENCIAS: BALDWIN:RS3703 WIX:46490 GONHER:
 LUBERFINER:LAF8114 FLEETGUARD:AF25497 DONALSON:P822769

0448



IPS-46556

APLICACIONES FORD, AUTOCAR, FREIGHTLINER, STERLING
 Ø Out:280 Ø Int:145 H:493

EQUIVALENCIAS: BALDWIN:RS3518 WIX:46556 GONHER:GA682R
 LUBERFINER:LAF1849 FLEETGUARD:AF25139M DONALSON:P527682

0449



CASE



IPS-46562

APLICACIONES CASE, INTERNATIONAL, CATERPILLAR, CHALLENGER, HITACHI, J.C.B., JOHN DEERE
 Ø Out:164 Ø Int:92 H:351

EQUIVALENCIAS: BALDWIN:RS3544 WIX:46562 GONHER:GA853R
 LUBERFINER:LAF4544 FLEETGUARD:AF25292 DONALSON:P828889

0450



CASE



IPS-46569

APLICACIONES CASE, INTERNATIONAL, CATERPILLAR, CHALLENGER, HITACHI, J.C.B., JOHN DEERE
 Ø Out:92/86 Ø Int:64 H:339

EQUIVALENCIAS: BALDWIN:RS3545 WIX:46569 GONHER:GA854R
 LUBERFINER:LAF4545 FLEETGUARD:AF25485 DONALSON:P829333

0451



JOHN DEERE



KOMATSU

IPS-46595

APLICACIONES CATERPILLAR, FREIGHTLINER, JOHN DEERE, KOMATSU
 Ø Out:149/141 Ø Int:105 H:381

EQUIVALENCIAS: BALDWIN:RS3507 WIX:46595 GONHER:
 LUBERFINER:LAF4504 FLEETGUARD:AF25130M DONALSON:P532504

0452



IPS-46607

KOMATSU

APLICACIONES
CATERPILLAR, FREIGHTLINER, JOHN DEERE, KOMATSU
Ø Out:280 Ø Int:148 H:417

EQUIVALENCIAS: BALDWIN:RS3506 WIX:46607 GONHER:
LUBERFINER:LAF4503 FLEETGUARD:AF25129M DONALSON:P532503

0454



CASE



IPS-46652

APLICACIONES
BOBCAT, CASE, INTERNATIONAL, CLAAS, JOHN DEERE
Ø Out:280 Ø Int:145 H:493

EQUIVALENCIAS: BALDWIN:RS3542 WIX:46652 GONHER:GA413R
LUBERFINER:LAF8148 FLEETGUARD:AF25588 DONALSON:P544098

0456



CASE

APLICACIONES
CASE
Ø Out:83 Ø Int:70 H:377

EQUIVALENCIAS: BALDWIN:RS3709 WIX:46663 GONHER:
LUBERFINER:LAF8405 FLEETGUARD:AF25521 DONALSON:P536941

0453



FREIGHTLINER



IPS-46628

APLICACIONES
FREIGHTLINER, AUTOCAR, INTERNATIONAL, JOHN DEERE
Ø Out:174/164 Ø Int:132 H:367

EQUIVALENCIAS: BALDWIN:RS3519 WIX:46628 GONHER:GA683R
LUBERFINER:LAF1956 FLEETGUARD:AF25345 DONALSON:P527683

0455



CASE



IPS-46662

APLICACIONES
CASE
Ø Out:137.9 Ø Int:81.5 H:392.9

EQUIVALENCIAS: BALDWIN:RS3708 WIX:46662 GONHER:
LUBERFINER:LAF8124 FLEETGUARD:AF25524 DONALSON:P536940

0457 ISUZU



GMC



IPS-46664

APLICACIONES
CHEVROLET, FORD, GMC, ISUZU, JOHN DEERE
Ø Out:282 Ø Int:147 H:397

EQUIVALENCIAS: BALDWIN:RS3548 WIX:46664 GONHER:GA930R
LUBERFINER:LAF3930 FLEETGUARD:AF25354 DONALSON:P533930

0458



GMC

IPS-46665

APLICACIONES
CHEVROLET, FORD, GMC, ISUZU, JOHN DEERE
Ø Out:150/142 Ø Int:108 H:377

EQUIVALENCIAS: BALDWIN:RS3722 WIX:46665 GONHER:GA890R
LUBERFINER:LAF3890 FLEETGUARD:AF25429 DONALSON:P538456

0459



APLICACIONES
BOBCAT, CASE, INTERNATIONAL, CATERPILLAR
Ø Out:84 Ø Int:65 H:318

EQUIVALENCIAS: BALDWIN:RS3543 WIX:46672 GONHER:
LUBERFINER:LAF9332 FLEETGUARD:AF25484 DONALSON:P829332

IPS-46702

0460



IPS-46701

APLICACIONES
HINO
Ø Out:237 Ø Int:130.9 H:330.2

EQUIVALENCIAS: BALDWIN:RS3736 WIX:46701 GONHER:GA697R
LUBERFINER:LAF5765 FLEETGUARD:AF25589 DONALSON:P536457

0461



APLICACIONES
HINO
Ø Out:135/126 Ø Int:91 H:329

EQUIVALENCIAS: BALDWIN:RS3737 WIX:46702 GONHER:
LUBERFINER:LAF5868 FLEETGUARD:AF25624 DONALSON:P536492

IPS-46770

0462



IPS-46745

APLICACIONES
INTERNATIONAL, JOHN DEERE
Ø Out:332 Ø Int:171 H:475

EQUIVALENCIAS: BALDWIN:RS3530 WIX:46745 GONHER:GA221R
LUBERFINER:LAF1953 FLEETGUARD:AF25033 DONALSON:P533235

0463



APLICACIONES
CATERPILLAR, CASE, VOLVO, KOMATSU
Ø Out:313.4 Ø Int:177.6 H:524

EQUIVALENCIAS: BALDWIN:RS3870 WIX:46770 GONHER:
LUBERFINER:LAF8150 FLEETGUARD:AF25454 DONALSON:P777868

0464



IPS-46772

APLICACIONES CAMIONES VOLVO
 Ø Int: 197 H: 418

EQUIVALENCIAS: BALDWIN: RS3740 WIX: 46772 GONHER: GA435R
 LUBERFINER: LAF5722 FLEETGUARD: AF25435 DONALSON: P540388

0466



IPS-46842

APLICACIONES FREIGHTLINER, INTERNATIONAL, PETERBILT
 Ø Out: 280 Ø Int: 145 H: 493

EQUIVALENCIAS: BALDWIN: RS3516 WIX: 46842 GONHER: GA518R
 LUBERFINER: LAF2536 FLEETGUARD: AF25219 DONALSON: P185106

0468



IPS-46871

APLICACIONES INTERNATIONAL, WORKHORSE
 Ø Out: 206.6 Ø Int: 116.7 H: 384

EQUIVALENCIAS: BALDWIN: RS4637 WIX: 46871 GONHER: GA798R
 LUBERFINER: LAF9102 FLEETGUARD: AF25732 DONALSON: P609239

0465

HITACHI ISUZU



JOHN DEERE



CASE

IPS-46776

APLICACIONES CASE, HITACHI, ISUZU, JOHN DEERE, KOBELCO
 Ø Out: 235 Ø Int: 132 H: 369

EQUIVALENCIAS: BALDWIN: PA2714 WIX: 46776 GONHER: -
 LUBERFINER: LAF5761 FLEETGUARD: AF25414 DONALSON: P821938

0467



IPS-46870

APLICACIONES INTERNATIONAL, WORKHORSE
 Ø Out: 259 Ø Int: 167 H: 406

EQUIVALENCIAS: BALDWIN: RS4636 WIX: 46870 GONHER: GA799R
 LUBERFINER: LAF9099 FLEETGUARD: AF25707 DONALSON: P606503

0469



IPS-46922

APLICACIONES INTERNATIONAL, FORD, JOHN DEERE, VOLVO
 Ø Out: 224.3 Ø Int: 180.4 H: 418.4

EQUIVALENCIAS: BALDWIN: RS4992 WIX: 46922 GONHER: GA770R
 LUBERFINER: LAF6922 FLEETGUARD: AF25962 DONALSON: P613334

0470



IPS-46923

APLICACIONES
INTERNATIONAL, FORD, JOHN DEERE, VOLVO
Ø Out:122.2 Ø Int:89.6 H:399

EQUIVALENCIAS: BALDWIN:RS5329 WIX:46923 GONHER: -
LUBERFINER:LAF6923 FLEETGUARD:AF25963 DONALSON:P613335

0472



JOHN DEERE



IPS-46983

APLICACIONES
INTERNATIONAL, JOHN DEERE
Ø Out:175/166 Ø Int:150 H:451

EQUIVALENCIAS: BALDWIN:RS3531 WIX:46983 GONHER:GA723R
LUBERFINER:LAF5720 FLEETGUARD:AF25430 DONALSON:P533723

0474



IPS-49126

APLICACIONES
VOLVO
Ø Out:332 Ø Int:219 H:495

EQUIVALENCIAS: BALDWIN:RS4642 WIX:49126 GONHER:GA624R
LUBERFINER:LAF9201 FLEETGUARD:AF26163M DONALSON:P605551

0471



GMC

ISUZU



IPS-46932

APLICACIONES
ISUZU, GMC, CHEVROLET
Ø Out:235 Ø Int:131 H:293

EQUIVALENCIAS: BALDWIN:RS5434 WIX:46932 GONHER:GA633R
LUBERFINER:LAF5633 FLEETGUARD:AF27693 DONALSON:P543614

0473



IPS-49089

APLICACIONES
INTERNATIONAL
Ø Out:255/134 Ø Int:156 H:379

EQUIVALENCIAS: BALDWIN:RS4863 WIX:49089 GONHER: -
LUBERFINER:LAF6664 FLEETGUARD:AF26268 DONALSON:P613337

0475

GRADALL



MASSEY FERGUSON

KOBELCO



IPS-49190

APLICACIONES
JOHN DEERE, KOBELCO, FERGUSON, GRADALL
Ø Out:195 Ø Int:117 H:359

EQUIVALENCIAS: BALDWIN:RS5782 WIX:49190 GONHER: -
LUBERFINER:LAF5429 FLEETGUARD:AF5429 DONALSON:PA5501



0476

KENWORTH



IPS-49456

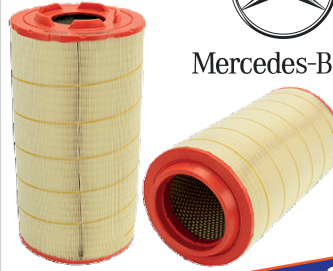
**APLICACIONES
KENWORTH**
H:284
Ø Int:253

EQUIVALENCIAS: BALDWIN:CA5500 WIX:49456 GONHER:GA660
LUBERFINER:LAF6116 FLEETGUARD:AF27688 DONALSON:P616056

0477



Mercedes-Benz



IPS-49558

**APLICACIONES
MERCEDES BENZ**
H:293
Ø Int:131

EQUIVALENCIAS: BALDWIN:RS5358 WIX:49558 GONHER:
LUBERFINER:LAF6242 FLEETGUARD:AF27857 DONALSON:

0478



IPS-909R

**APLICACIONES
VOLVO C11-R**
H:452
Ø Int:144.8

EQUIVALENCIAS: BALDWIN: - WIX: - GONHER:GA909R
LUBERFINER:LAF3862 FLEETGUARD:AF26111 DONALSON:

0479



IPS-908R

**APLICACIONES
VOLVO C11-R**
H:407.1
Ø Int:127.7

EQUIVALENCIAS: BALDWIN: - WIX: - GONHER:GA908R
LUBERFINER:LAF3863 FLEETGUARD:AF26105 DONALSON:

0480



IPS-803R

**APLICACIONES
CAMIONES CON HAUSING REYTOR**
H:467.5
Ø Int:148

EQUIVALENCIAS: BALDWIN: - WIX: - GONHER:GA803R
LUBERFINER: - FLEETGUARD:AIT-2057 DONALSON:

0481



IPS-804R

**APLICACIONES
MERCEDES BENZ Torino**
H:437.7
Ø Int:127.7

EQUIVALENCIAS: BALDWIN: - WIX: - GONHER:GA804R
LUBERFINER: - FLEETGUARD:IT-2057S DONALSON:

0482



IPS-698R

APLICACIONES
HINO 500
Ø Out:230 Ø Int:115 H:415.9

EQUIVALENCIAS: BALDWIN: - WIX: - GONHER:GA698R
LUBERFINER: - FLEETGUARD: - DONALSON:P902384

0483



IPS-81

APLICACIONES
CHEVROLET C7500 KODIAK
Ø Out:168.7 Ø Int:126.5 H:112.8

EQUIVALENCIAS: BALDWIN: - WIX: - GONHER:GA81
LUBERFINER: - FLEETGUARD: - DONALSON: -

0484



IPS-D46R

APLICACIONES
NISSAN CABSTAR
Ø Out:174 Ø Int:97 H:186

EQUIVALENCIAS: BALDWIN:RS5670 WIX: - GONHER:GAD46R
LUBERFINER: - FLEETGUARD:AF26475 DONALSON: -

0485



SCANIA

IPS-517R

APLICACIONES
SCANIA
Ø Out:300 Ø Int:169 H:435

EQUIVALENCIAS: BALDWIN:RS3724 WIX: - GONHER:GA517R
LUBERFINER:LAF8088 FLEETGUARD:AF25314 DONALSON:P778335

0486



IPS-845201

APLICACIONES
HINO 300
Ø Out:237 Ø Int:132 H:216

EQUIVALENCIAS: BALDWIN: - WIX: - GONHER: -
LUBERFINER: - FLEETGUARD: - DONALSON:P845201

0487



HINO

IPS-46701

APLICACIONES
HINO
Ø Out:235 Ø Int:132 H:343

EQUIVALENCIAS: BALDWIN:RS3736 WIX:46701 GONHER:CA9244
LUBERFINER: - FLEETGUARD:LAF8145 DONALSON: -

0488



IPS-789377

APLICACIONES
AUTOBUSES SCANIA IRIZAR
 Ø Out:247 Ø Int:168 H:490

EQUIVALENCIAS: BALDWIN:RS5488 WIX: - GONHER: -
 LUBERFINER:LAF6690 FLEETGUARD:AF26677 DONALSON:P789377

0489



IPS-532473



APLICACIONES
FIATALLIS, CATERPILLAR
 Ø Out:290 Ø Int:122 H:341

EQUIVALENCIAS: BALDWIN: - WIX: - GONHER: -
 LUBERFINER:LAF4273 FLEETGUARD: - DONALSON:P532473

0490



IPS-10387

APLICACIONES
RETROEXCAVADORA CATERPILLAR 416F
 Ø Out:261 Ø Int:130 H:38

EQUIVALENCIAS: BALDWIN:PA5290 WIX:WA10387 GONHER: -
 LUBERFINER: - FLEETGUARD: - DONALSON:3466688

0491



IPS-10014

APLICACIONES
RETROEXCAVADORA CATERPILLAR 416F
 Ø Out:302 Ø Int:170 H:208

EQUIVALENCIAS: BALDWIN:PA5289 WIX:WA10014 GONHER: -
 LUBERFINER: - FLEETGUARD: - DONALSON:5280585

0492



IPS-49109

APLICACIONES
CATERPILLAR, GENIE, J.C.B., VALTRA
 Ø Out:208 Ø Int:141 H:44

EQUIVALENCIAS: BALDWIN:PA4997 WIX:49109 GONHER:CF2135
 LUBERFINER:LAF3237 FLEETGUARD: - DONALSON: -

0493



IPS-49518

APLICACIONES
JCB, CARRIER
 Ø Out:195 Ø Int:117 H:359

EQUIVALENCIAS: BALDWIN:PA5584 WIX:49518 GONHER: -
 LUBERFINER:LAF4348 FLEETGUARD: - DONALSON: -

0494



IPS-23210

APLICACIONES
CATERPILLAR, GENIE, J.C.B., VALTRA
 Ø Out:223 Ø Int:158 H:172

EQUIVALENCIAS: BALDWIN:CA4996 WIX:CP23210 GONHER:
 LUBERFINER:LAF3226 FLEETGUARD: DONALSON:CP23210

0496



IPS-10229

APLICACIONES
HINO 300
 Ø Out:236.9 Ø Int:130.8 H:260.3

EQUIVALENCIAS: BALDWIN: - WIX: WA10229 GONHER:GA8020R
 LUBERFINER: - FLEETGUARD:AF26525 DONALSON:P812162

0498



IPS-46433

APLICACIONES
HINO, INTERNATIONAL, KENWORTH, STERLING
 Ø Out:236 Ø Int:130 H:325

EQUIVALENCIAS: BALDWIN:RS2863 WIX:46433P GONHER:GA197R
 LUBERFINER: LAF1878 FLEETGUARD:AF4878 DONALSON:P527484

0495



IPS-5783

APLICACIONES
JOHN DEERE, GRADALL, KOBELCO, NEW HOLLAND
 Ø Out:129 Ø Int:105 H:365

EQUIVALENCIAS: BALDWIN:RS5783 WIX: - GONHER: -
 LUBERFINER:LAF5430 FLEETGUARD: - DONALSON: -

0497



IPS-46429

APLICACIONES
APACHE, CHEVROLET, FORD, GMC
 Ø Out:135/126 Ø Int:91 H:305

EQUIVALENCIAS: BALDWIN:RS3501 WIX:46429P GONHER:GA768R
 LUBERFINER:LAF3585 FLEETGUARD:AF2521.5 DONALSON:P527680

0499



IPS-46744

APLICACIONES
FREIGHTLINER, FORD, CASE, JOHN DEERE, KOMATSU
 Ø Out:235 Ø Int:132 H:483

EQUIVALENCIAS: BALDWIN:RS3517XP WIX:46744P GONHER:GA966R
 LUBERFINER:LAF4498 FLEETGUARD:AF25667 DONALSON:P532966

0500



FREIGHTLINER

JOHN DEERE



CASE

Ford

KOMATSU



IPS-46782

APLICACIONES
FREIGHTLINER, FORD, CASE, JOHN DEERE, KOMATSU
Ø Out:135/126 Ø Int:92 H:447

EQUIVALENCIAS: BALDWIN:RS3717 WIX:46782P GONHER:GA967R
LUBERFINER:LAF3781 FLEETGUARD:AF26114 DONALSON:P538542

0502



IPS-801R

APLICACIONES
MERCEDES-BENZ
Ø Out:240 Ø Int:141 H:419

EQUIVALENCIAS: BALDWIN: WIX:MA1500 GONHER:GA801R
LUBERFINER:LAF5763 FLEETGUARD:AF26287 DONALSON:P603232

0504



IPS-3095R

APLICACIONES
MINIBUS MERCEDES-BENZ
Ø Out:271.4 Ø Int:174.2 H:174.2

EQUIVALENCIAS: BALDWIN: WIX:MA1502 GONHER:GA3095R
LUBERFINER:LAF3949 FLEETGUARD:AF26358 DONALSON:P616091

0501



IPS-49088

APLICACIONES
INTERNATIONAL
Ø Out:310.5 Ø Int:251.8 H:399.4

EQUIVALENCIAS: BALDWIN:RS4862 WIX:49088P GONHER:GA4862R
LUBERFINER:LAF6663 FLEETGUARD:AF26103 DONALSON:P613336

0503



IPS-802R

APLICACIONES
MERCEDES-BENZ
Ø Out:144/140 Ø Int:119 H:398

EQUIVALENCIAS: BALDWIN: WIX:MA1501 GONHER:C
LUBERFINER:LAF5764 FLEETGUARD:AF26288 DONALSON:P603233

0505



IPS-3096R

APLICACIONES
MINIBUS MERCEDES-BENZ
Ø Out:160.7 Ø Int:127 H:393.2

EQUIVALENCIAS: BALDWIN: WIX:MA1503 GONHER:GA3096R
LUBERFINER: FLEETGUARD:AF26290 DONALSON:P616097

0506



IPS-904R

**APLICACIONES
CAMIONES MERCEDES BENZ**
Ø Out:251 Ø Int:125 H:423

EQUIVALENCIAS: BALDWIN:RS3731 WIX:WA10510 GONHER:GA904R
LUBERFINER: LAF3860 FLEETGUARD:AF25856 DONALSON:P536036

0507



IPS-905R

**APLICACIONES
CAMIONES MERCEDES BENZ**
Ø Out:144/140 Ø Int:119 H:398

EQUIVALENCIAS: BALDWIN: - WIX:MA1511 GONHER:GA905R
LUBERFINER:LAF5764 FLEETGUARD:AF25857 DONALSON:P616082

0508



IPS-5358

APLICACIONES

Ø Out:156 Ø Int:137 H:510

EQUIVALENCIAS: BALDWIN:RS5358 WIX:P784457 GONHER: -
LUBERFINER: - FLEETGUARD:AF26678 DONALSON:P955466

0509



IPS-10001

**APLICACIONES
VOLVO BUS ARTICULADO**
Ø Out:303.7 Ø Int:148 H:406

EQUIVALENCIAS: BALDWIN:RS4966 WIX:WA10001 GONHER: -
LUBERFINER:LAF8838 FLEETGUARD:AF25631 DONALSON:P782857

0510



IPS-10233

**APLICACIONES
HINO**
Ø Out:213 Ø Int:120 H:336

EQUIVALENCIAS: BALDWIN:RS30238 WIX:WA10233 GONHER: -
LUBERFINER: - FLEETGUARD:AF26523 DONALSON:P503360

0511



IPS-10435

**APLICACIONES
MERCEDES BENZ CAMIONES Y AUTOBUSES**
Ø Out:195 Ø Int:117 H:359

EQUIVALENCIAS: BALDWIN:RS30130 WIX:WA10435 GONHER: -
LUBERFINER: - FLEETGUARD:AF323 DONALSON:P619046

0512



IPS-1176

APLICACIONES HINO
H:324

Ø Out:111 Ø Int:81

EQUIVALENCIAS: BALDWIN:RS30239 WIX:WA1176 GONHER: -
LUBERFINER: - FLEETGUARD:178013370 DONALSON:P503370

0513



IPS-1512

APLICACIONES BECCAR, FORD, MERCEDES-BENZ, VOLKSWAGEN
H:471

EQUIVALENCIAS: BALDWIN:RS5627 WIX:WA1512 GONHER:GA906R
LUBERFINER:LAF3864 FLEETGUARD: - DONALSON: -

0514



IPS-1513

APLICACIONES BECCAR, FORD, MERCEDES-BENZ, VOLKSWAGEN
H:416

Ø Out:146 Ø Int:105

EQUIVALENCIAS: BALDWIN:RS5628 WIX:WA1513 GONHER:GA635R
LUBERFINER:LAF3865 FLEETGUARD:AF26211 DONALSON:P621918

0515



IPS-6292

APLICACIONES BECCAR, MERCEDES-BENZ
H:416

Ø Out:147 Ø Int:128

EQUIVALENCIAS: BALDWIN:RS5676 WIX:WA6292 GONHER: -
LUBERFINER:IT3101S FLEETGUARD:AF25196 DONALSON:P621905

0516



IPS-864R

APLICACIONES BECCAR, FORD, MERCEDES-BENZ, VOLKSWAGEN
H:400

Ø Out:263.1 Ø Int:148.6

EQUIVALENCIAS: BALDWIN:RS5627 WIX: - GONHER:GA864R
LUBERFINER:3864 / 5959 FLEETGUARD:AF25997 DONALSON:P618941

0517



IPS-4971

APLICACIONES MAN
H:510

Ø Out:267 Ø Int:170

EQUIVALENCIAS: BALDWIN:RS4971 WIX:C271250/1 GONHER: -
LUBERFINER: - FLEETGUARD: - DONALSON:81084050021